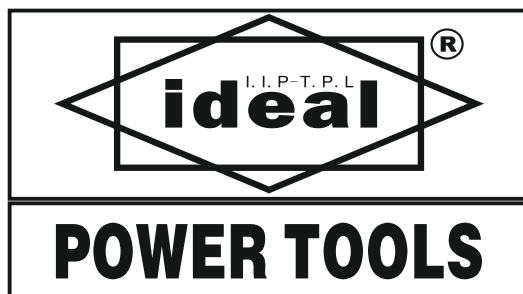


203x287mm

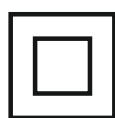


AIR IMPACT WRENCH

ID AW110

Part No.: 20409

OPERATION INSTRUCTIONS



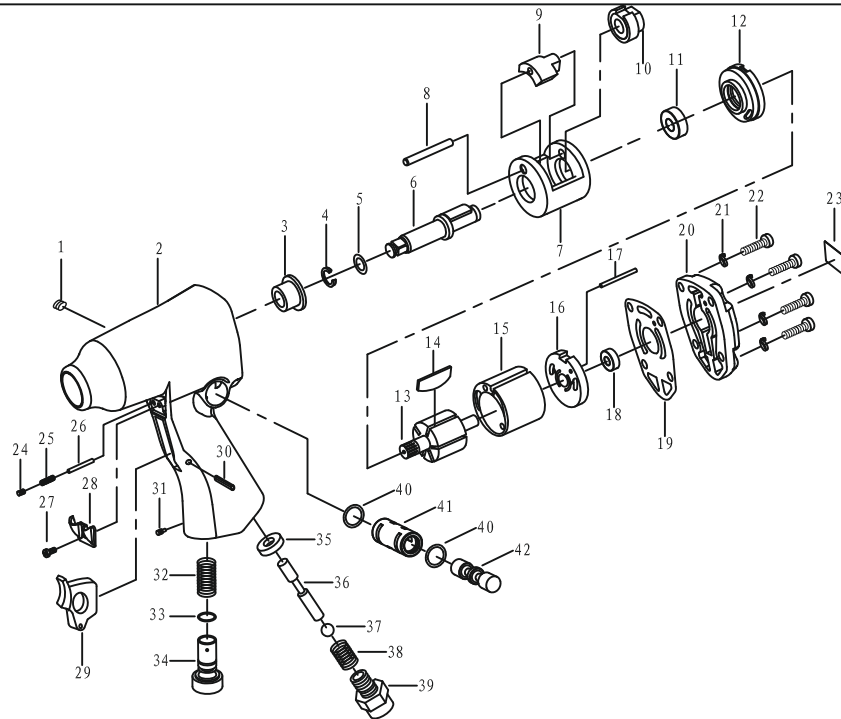
Read though carefully and understand these instructions before use.

3/8" DRIVE IMPACT WRENCH

Specifications

Bolt Capacity.....	3/8" (10mm)	Air Inlet.....	1/4"
Free Speed.....	10,000RPM	Air pressure.....	90PSI (6.3Kg/cm ²)
Average Air Consumption.....	3.5CFM@90PSI	Weight.....	1.18Kg
Max Torque.....	176N-M	Exhaust.....	Front Exhaust

Parts List



Ref.	Part#	Description	Q'TY	Ref.	Part#	Description	Q'TY
1	GB/T77-2000 M8*8	Screw	1	23	WFI-1071-04	Nameplate	1
2	WFI-1071-01	Housing	1	24	GB/T77-2000 M4*4	Screw	1
3	WFI-2072-03	Oily Bushing	1	25	WFI-1070-26	Spring	1
4	WFI-2071-25	Anti-off Circle	1	26	WFI-1071-05	Pin	1
5	O Ring 3.2*1.9	O-Ring	1	27	GB/T845-1985 ST2.9*8	Screw	1
6	WFI-2072-05	Drive Shaft	1	28	WFI-1071-06	Muffle Cover	1
7	WFI-2072-06	Hammer Cage	1	29	WFH-1040-08	Trigger	1
8	WFI-2072-07	Pin	1	30	GB/T879.2-2000 3*14	Straight Pin	1
9	WFI-2072-08	Hammer Dog	1	31	GB/T79-2000 M5*8	Screw	1
10	WFI-2072-09	Drive Cam	1	32	WFI-1070-04	Regulator Spring	1
11	GB/T276-1994 6900-2Z	Bearing	1	33	JB/T6659-2007 8*2	O-Ring	1
12	WFI-2072-11	Front Cylinder Head	1	34	WFI-1070-03	Flow Regulator	1
13	WFI-2072-12	Rotor	1	35	WFI-1070-05	Bushing	1
14	WFI-2072-13	Blade	6	36	WFI-1071-07	Pin	1
15	WFI-2072-14	Cylinder	1	37	GB/T308-2002 φ9.525	Steel Ball	1
16	WFI-2072-16	Back Cylinder Head	1	38	WFI-1070-07	Taper Spring	1
17	WFI-2072-15	Pin	1	39	WFI-1070-08	Air Inlet Connector	1
18	GB/T276-1994 626-2Z	Bearing	1	40	O Ring 9.8*1.5	O-Ring	2
19	WFI-1071-02	Sealing Gasket	1	41	WFI-1071-08	Reversal Regulator Sleeve	1
20	WFI-1071-03	Real Cover	1	42	WFI-1071-09	Reversal Regulator	1
21	GB/T93-1987 5	Spring Gasket	4				
22	GB/T70.1-2000 M5*14	Screw	4				