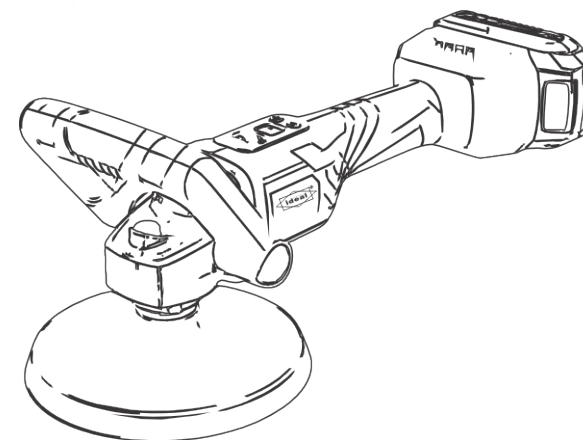




# BRUSHLESS POLISHER

Original Operating Instructions

**IDU SP180**



To reduce the risk of injury, the user must read and understand the Operator's Manual before using this product. Save these instructions for future reference.

# Symbols



## WARNING!

Indicates an imminent danger. Failure to follow this instruction could result in serious injury or even death



## ATTENTION!

Indicates the possibility of a hazardous situation. Failure to follow this instruction may result in personal injury or property damage

## GENERAL POWER TOOL SAFETY WARNINGS



### WARNING!

Read all safety warnings and all instructions. Failure to follow the warnings and instructions may result in electric shock, fire and/or serious injury

Save all warnings and instructions for future reference

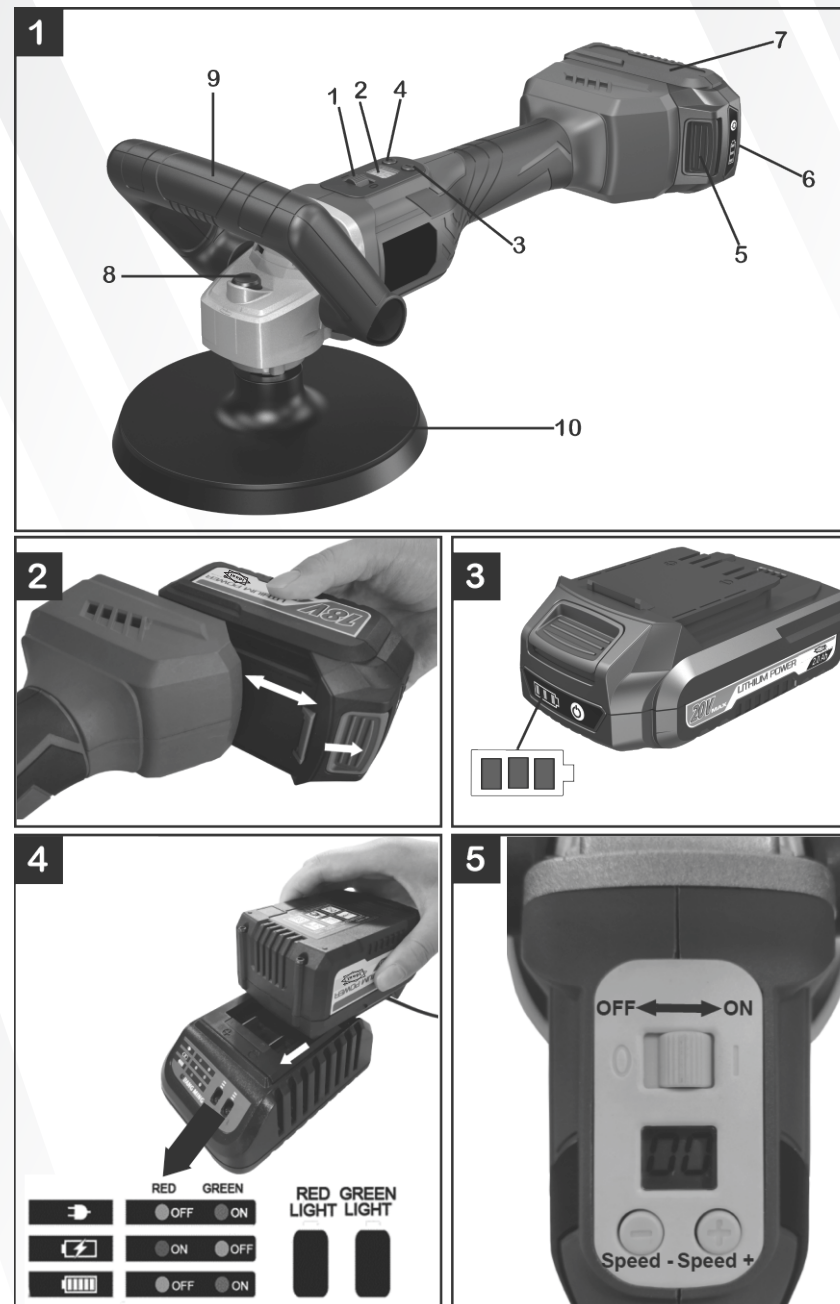
The term "power tool" in the warnings refers to your mains-operated (corded) power tool or battery operated (cordless) power tool

### 1) Work area safety

- Keep work area clean and well lit. Cluttered or dark areas invite accidents
- Do not operate power tools in explosive atmospheres, such as in the presence of flammable liquids, gases or dust. Power tools create sparks which may ignite the dust or fumes
- Keep children and bystanders away while operating a power tool. Distractions can cause you to lose control

### 2) Electrical safety

- Power tool plugs must match the outlet. Never modify the plug in any way. Do not use any adapter plugs with earthed (grounded) power tools. Unmodified plugs and matching outlets will reduce risk of electric shock
- Avoid body contact with earthed or grounded surfaces such as pipes, radiators, ranges and refrigerators. There is an increased risk of electric shock if your body is earthed or grounded
- Do not expose power tools to rain or wet conditions. Water entering a power tool will increase the risk of electric shock
- Do not abuse the cord. Never use the cord for carrying, pulling or unplugging the power tool. Keep cord away from heat, oil, sharp edges or moving parts. Damaged or entangled cords increase the risk of electric shock
- When operating a power tool outdoors, use an extension cord suitable for outdoor use. Use of a cord suitable for outdoor use reduces the risk of electric shock



- Threaded mounting of accessories must match the grinder spindle thread. For accessories mounted by flanges, the arbour hole of the accessory must fit the locating diameter of the flange. Accessories that do not match the mounting hardware of the power tool will run out of balance, vibrate excessively and may cause loss of control.

- Do not use a damaged accessory. Before each use inspect the accessory such as abrasive wheels for chips and cracks, backing pad for cracks, tear or excess wear, wire brush for loose or cracked wires. If power tool or accessory is dropped, inspect for damage or install an undamaged accessory. After inspecting and installing an accessory, position yourself and bystanders away from the plane of the rotating accessory and run the power tool at maximum no-load speed for one minute. Damaged accessories will normally break apart during this test time.

- Wear personal protective equipment. Depending on application, use face shield, safety goggles or safety glasses. As appropriate, wear dust mask, hearing protectors, gloves and workshop apron capable of stopping small abrasive or workpiece fragments. The eye protection must be capable of stopping flying debris generated by various operations. The dust mask or respirator must be capable of filtering particles generated by your operation. Prolonged exposure to high intensity noise may cause hearing loss.

- Keep bystanders a safe distance away from work area. Anyone entering the work area must wear personal protective equipment. Fragments of workpiece or of a broken accessory may fly away and cause injury beyond immediate area of operation.

- Hold the power tool by insulated gripping surfaces only, when performing an operation where the cutting accessory may contact hidden wiring or its own cord. Cutting accessory contacting a "live" wire may make exposed metal parts of the power tool "live" and could give the operator an electric shock.

- Position the cord clear of the spinning accessory. If you lose control, the cord may be cut or snagged and your hand or arm may be pulled into the spinning accessory.

- Never lay the power tool down until the accessory has come to a complete stop. The spinning accessory may grab the surface and pull the power tool out of your control.

- Do not run the power tool while carrying it at your side. Accidental contact with the spinning accessory could snag your clothing, pulling the accessory into your body.

- Regularly clean the power tool's air vents. The motor's fan will draw the dust inside the housing and excessive accumulation of powdered metal may cause electrical hazards.

- Do not operate the power tool near flammable materials. Sparks could ignite these materials.

- Do not use accessories that require liquid coolants. Using water or other liquid coolants may result in electrocution or shock.

#### **Kickback and Related Warnings**

Kickback is a sudden reaction to a pinched or snagged rotating wheel, backing pad, brush or any other accessory. Pinching or snagging causes rapid stalling of the rotating accessory which in turn causes the uncontrolled power tool to be forced in the direction opposite of the accessory's rotation at the point of the binding.

For example, if an abrasive wheel is snagged or pinched by the workpiece, the edge of the wheel that is entering into the pinch point can dig into the surface of the material causing the wheel to climb out or kick out. The wheel may either jump toward or away from the operator, depending on direction of the wheel's movement at the point of pinching. Abrasive wheels may also break under these conditions. Kickback is the result of power tool misuse and/or incorrect operating procedures or conditions and can be avoided by taking proper precautions as given below.

- Maintain a firm grip on the power tool and position your body and arm to allow you to resist kickback forces. Always use auxiliary handle, if provided, for maximum control over kickback or torque reaction during start-up.

The operator can control torque reactions or kickback forces, if proper precautions are taken.

- Never place your hand near the rotating accessory. Accessory may kickback over your hand.

- Do not position your body in the area where power tool will move if kickback occurs. Kickback will propel the tool in direction opposite to the wheel's movement at the point of snagging.

- Use special care when working corners, sharp edges etc. Avoid bouncing and snagging the accessory. Corners, sharp edges or bouncing have a tendency to snag the rotating accessory and cause loss of control or kickback. Do not attach a saw chain woodcarving blade or toothed saw blade. Such blades create frequent kickback and loss of control.

#### **Safety Warnings Specific for Polishing Operations**

- Do not allow any loose portion of the polishing bonnet or its attachment strings to spin freely. Tuck away or trim any loose attachment strings. Loose and spinning attachment strings can entangle your fingers or snag on the workpiece.

- If operating a power tool in a damp location is unavoidable, use a residual current device (RCD) protected supply. Use of an RCD reduces the risk of electric shock.

#### **3) Personal safety**

- Stay alert, watch what you are doing and use common sense when operating a power tool. Do not use a power tool while you are tired or under the influence of drugs, alcohol or medication. A moment of inattention while operating power tools may result in serious personal injury. Use personal protective equipment. Always wear eye protection. Protective equipment such as dust mask, non-skid safety shoes, hard hat, or hearing protection used for appropriate conditions will reduce personal injuries.

- Prevent unintentional starting. Ensure the switch is in the off-position before connecting to power source and /or battery pack, picking up or carrying the tool. Carrying power tools with your finger on the switch or energising power tools that have the switch on invites accidents.

- Remove any adjusting key or wrench before turning the power tool on. A wrench or a key left attached to a rotating part of the power tool may result in personal injury.

- Do not overreach. Keep proper footing and balance at all times. This enables better control of the power tool in unexpected situations.

- Dress properly. Do not wear loose clothing or jewellery. Keep your hair, clothing and gloves away from moving parts. Loose clothes, jewellery or long hair can be caught in moving parts.

- If devices are provided for the connection of dust extraction and collection facilities, ensure these are connected and properly used.

#### **4) Power tool use and care**

- Do not force the power tool. Use the correct power tool for your application. The correct power tool will do the job better and safer at the rate for which it was designed.

- Do not use the power tool if the switch does not turn it on and off. Any power tool that cannot be controlled with the switch is dangerous and must be repaired.

- Disconnect the plug from the power source and/or the battery pack from the power tool before making any adjustments, changing accessories, or storing power tools. Such preventive safety measures reduce the risk of starting the power tool accidentally.

- Store idle power tools out of the reach of children and do not allow persons unfamiliar with the power tool or these instructions to operate the power tool. Power tools are dangerous in the hands of untrained users.

- Maintain power tools. Check for misalignment or binding of moving parts, breakage of parts and any other condition that may affect the power tool's operation. If damaged, have the power tool repaired before use. Many accidents are caused by poorly maintained power tools.

- Keep cutting tools sharp and clean. Properly maintained cutting tools with sharp cutting edges are less likely to bind and are easier to control.

- Use the power tool, accessories and tool bits etc. in accordance with these instructions. Use of the power tool for operations different from those intended could result in a hazardous situation.

#### **SAFETY INSTRUCTIONS FOR ORBITAL POLISHER**

- This power tool is intended to function as a polisher. Read all safety warnings, instructions, illustrations and specifications provided with this power tool. Failure to follow all instructions listed below may result in electric shock, fire and/or serious injury.

- Operations such as grinding, sanding, wire brushing, or cutting-off are not recommended to be performed with this power tool.

Operations for which the power tool was not designed may create a hazard and cause personal injury.

- Do not use accessories which are not specifically designed and recommended by the tool manufacturer. Just because the accessory can be attached to your power tool, it does not assure safe operation.

- The rated speed of the accessory must be at least equal to the maximum speed marked on the power tool. Accessories running faster than their rated speed can break and fly apart.

- The outside diameter and the thickness of your accessory must be within the capacity rating of your power tool. Incorrectly sized accessories cannot be adequately guarded or controlled.

## SPECIFICATIONS

Model	<b>IDU SP-180</b>
Rated voltage	20 V
Battery Type*	Li-Ion
Engine type	Brushless
No load speed	500-2800 rpm
Pad diameter	180 mm
Spindle thread	M14
Protection class	<b>II</b>

In connection with the development and technical progress, we reserve the right to make technical changes without prior notice.

\*Note: specifications may vary depending on the country of delivery.

### Know your tool Fig.1

1. On / off switch
2. Digital display
3. Speed reduction button
4. Speed increase button
5. Battery disconnect button
6. LED charge indicator
7. Battery
8. Shaft lock button
9. Support handle
10. Polishing pad

## DESCRIPTION

### Product purpose

This polishing machine is designed for:

- for the intended use of the product and in the workshop,
- for performing water polishing of any kind, for example, for polishing a varnished surface of a car, polishing a furniture, a lot of furniture, etc. with polishing sponges, sheepskins and wool
- for use in the kit with polishing materials, which are calculated for operation at a speed of rotation of at least 500 rpm

## USER'S MANUAL



**ATTENTION:** Before adjusting or checking the functions of the tool, be sure to turn it off and its battery pack removed.

Installing or removing the battery pack



**ATTENTION:** Be sure to turn off the tool before installing and removing the battery pack.

When installing and removing the battery pack, hold the tool and battery pack firmly. If this requirement is not observed, they can slip out of hands, which will result in damage to the instrument, battery pack and injury to the operator.

Press button 5 and remove the battery pack from the main body of the machine, as shown in Figure 2.

### Battery Charge

#### Battery Charging Procedure:

1. Disconnect the battery from the device.
2. Connect the charger supplied with the product to AC power.
3. Insert the battery 7 into the charger, making sure that the battery is fully inserted in the charger. (figure 4)  
A steady red light indicates that the battery is being charged.
4. After approximately 60 minutes, the battery is fully charged.
5. The completion of charging will be indicated by a steady green light. The battery is fully charged and can be used or left in the charger. To remove the battery from the charger, press button 5 to disconnect the battery on the battery pack.

Always charge the battery at a temperature between 5 °C and 40 °C.

A temperature below 5 °C can lead to overcharging, which is dangerous for subsequent use. The battery cannot be charged at temperatures higher than 40 °C. Most favorable temperature to charge the battery from 20 °C to 25 °C.

### Additional safety instructions

- The mains voltage and the voltage specifications on the rating plate must correspond.
- Do not press the spindle lock until the tool stops.

### Safety precautions for working with the battery pack

1. Before using the battery pack, read all instructions and warning labels on (1) the battery charger, (2) the battery pack, and (3) the battery-powered tool.
2. Do not disassemble the battery pack.
3. If the operating time of the battery pack has been significantly reduced, stop operation immediately. Otherwise, overheating of the unit may occur, resulting in burns and even explosion.
4. In case of contact with electrolyte, flush eyes with plenty of clean water and consult a doctor immediately. This may cause loss of vision.
5. Do not short-circuit the contacts of the battery pack with each other.
  - (1) Do not touch the contacts with any conductive objects.
  - (2) Do not store the battery pack in a container with other metal objects such as nails, coins, etc.
  - (3) Do not expose the battery pack to rain or water.
 Shorting the contacts of the battery pack together can lead to a large current, overheating, possible burns, and even damage to the unit.
6. Do not store the tool and battery pack in places where temperatures can reach or exceed 50 °C (122 °F).
7. Do not dispose of the battery pack in a fire, even if it is badly damaged or completely out of order. The battery pack may explode when exposed to fire.
8. Do not drop or hit the battery pack.
9. Do not use a damaged battery pack.
10. The lithium-ion batteries included in the kit must be operated in accordance with the requirements of hazardous goods legislation. For commercial transportation, for example, by a third party or freight forwarder, special warnings and markings must be put on the packaging. In the process of preparing the device for shipment, be sure to consult with a specialist in hazardous materials. Also observe local requirements and regulations. They may be stricter.
11. Follow local laws regarding battery disposal.

### Tips for maximizing battery life

1. Charge the battery pack before it is completely discharged. Be sure to stop working with the tool and charge the battery pack if you notice a decrease in tool power.
  2. Never recharge a fully charged battery pack. Recharging shortens battery life.
  3. Charge the battery pack at room temperature between 10 - 40 °C (50 - 104 °F). Before charging the hot battery pack, allow it to cool.
  4. Charge the lithium-ion battery pack if you will not use the instrument for a long time (more than six months).
- SAVE THESE INSTRUCTIONS**



## LCD display

### 1. Speed Selections instruction

Speed Selections			
Selections	Numbers Shown on the Screen	Speed Indicated	Remark
0	0	0	Power ON
1	5	500±10%	
2	8	800±10%	
3	10	1000±10%	
4	15	1500±10%	
5	20	2000±10%	
6	25	2500±10%	
7	30	3000±10%	The Highest Speed

### 2. Errors Displayed Instruction

Error No	Possible Reasons	Solutions
E1	Over load protection: 1. Over loaded (the working electricity current more than 50A+4A ≤500mA) 2. The machine is damaged	1. Power off the machine 2. Re-start the machine 3. If above 2 actions are not workable, please send the machine to the professionals for repairing.
E3	Power-on Failure protection: 1. Some outside reason leads the motor doesn't work 2. The machine is damaged	
E4	Block Torsion Protection: 1. Over loaded ; 2. The machine is damaged.	
E5	Over heat protection: The machine is running with high loading for long time. And the temperature of MOS arrived more than 100 °C, which leads the machine stop running.	Power off the machine and cool the machine for 0.5h. The machine can be repowered on when MOS temperature decreases to 60°C
E6	Lack of Voltage Protection: The volume of electricity charge is too lower than 14V±0.5V	Charge the battery and use the fully charged battery
E7	Hardware Protection: machine fault	1. Power off the machine 2. Re-start the machine 3. If above 2 actions are not workable, please send the machine to the professionals for repairing.
E8	Motor protection: machine fault	
E9	Over Voltage protection: Battery voltage more than 30V	1. Check the voltage of the battery is normal or not. It should be ≤21V 2. Use the qualified battery.

When the charging of one battery is fully completed, you must leave the charger in the off state for about 15 minutes before starting to charge the next battery. Do not charge more than two batteries in a row

**IMPORTANT!** Do not turn on the tool if the battery is low. This may damage the battery

Never fully discharge the battery

After a long shelf life without operation, the lithium-ion battery loses its charge (the so-called "self-discharge"). After long periods of storage, or before 1st use, it is recommended that the battery be fully charged

Charge indicators (figure 4)

Use only the voltage specified on the charger.

Before charging the battery, first connect the power cable to the mains and then connect the battery pack to the charger. After the battery has been fully charged, disconnect the power supply after removing the battery pack from the charger.

This device is for indoor use only. Water, rain, or moisture should be avoided.

Do not expose the charger to rain, snow and other extreme weather conditions. Do not use the power tools in damp or wet locations.

Do not use the charger if it has been hit hard, dropped or damaged in any way, take it to an authorized customer service center.

Do not disassemble the charger. Bring it to customer service if it needs to be repaired or serviced. Incorrect assembly could result in electric shock or fire.

Before starting work

Unpack the polishing machine, check the delivery kit and adjust the machine for the absence of vehicle tunes

Turn on/ off the machine

Press the on/ off button 1 to position I to start the machine. "00" is displayed on the LCD

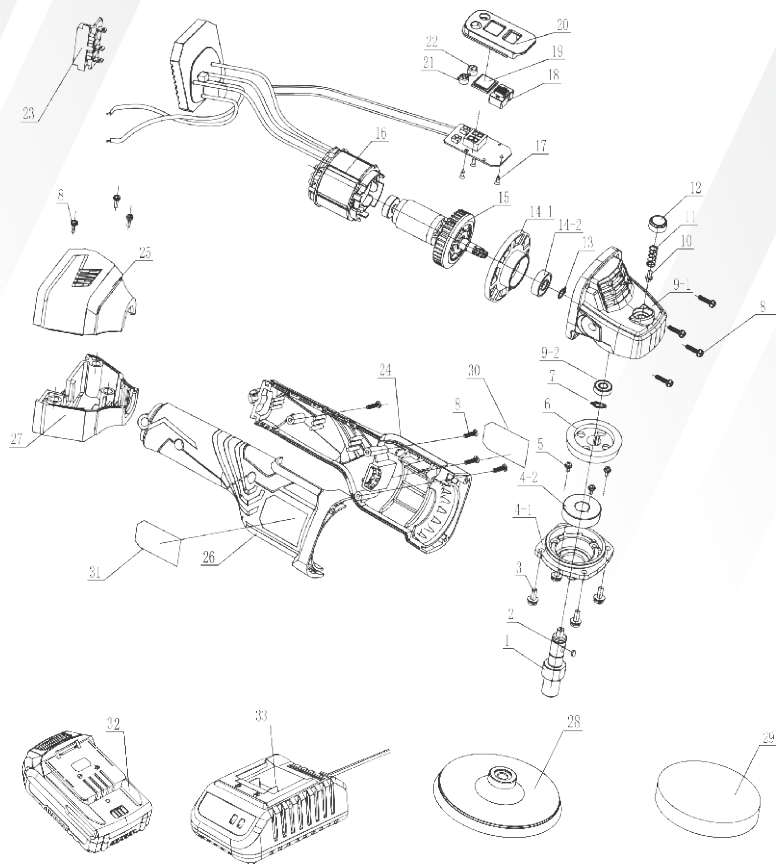
Press the on/ off button to position O to turn off the machine

Speed selection

(figure 5)

Increase the speed : Push speed increase button 4 after the machine is power on. The LCD display shows numbers of 05, 08, 15, 20, 25, 30 when pushing the button, which means the speed steps of 500rpm, 800rpm, 1500rpm, 2500rpm, 2800rpm relatively

Decrease the speed: Push speed decrease button 4 after the machine is power on and when the machine's speed is higher than 500rpm. The LCD display shows numbers of 05, 08, 15, 20, 25, 30 when pushing the button, which means the speed steps of 500rpm, 800rpm, 1500rpm, 2500rpm, 2800rpm relatively



## IDU-SP180 BRUSHLESS POLISHER

Part No.	Part Name	Qty
1	Output shaft	1
2	Half-round key	1
3	screw with washer	4
4	Front cover set	
4-1	Front cover	1
4-2	bearing 6201	1
5	screw with washer	3
6	Big gear	1
7	circlip	1

Attaching or replacing the tool

- By opening the polishing tool over the eyes, press it firmly to the Velcro disc
- **USE ONLY THE ABSOLUTELY WHOLE POLISHING TOOL**
- Switch on the polishing machine and let it run for about 30 seconds. Ensure that the disk rotates without beating or vibrating
- Switch off the water polisher

### WORK INSTRUCTIONS



**ATTENTION!**

After turning off the machine, the polishing tool still continues to rotate for a while

After replacing the tool (for example, when a polishing sponge is installed, a gray circle is installed) due to a difference of time, it is not excluded. In this case, change the speed of rotation with the help of the regulator until the vibration is not reduced to an acceptable level

- Before bringing the product up to a polished surface, it must be turned on and allowed to be installed
- To achieve good results in polishing and to prolong the period of service, use the product for a long time that is fully movable
- When handling "sensitive" surfaces (for example, to protect the car), you should not be too much to eat
- When using the polishing pad, it is necessary to use a separate polishing tip for each type of pad

### MAINTENANCE AND CARE



**WARNING!**

Before starting any operation on the polishing machine, be sure to remove the battery

#### Cleaning

- Regularly clean the machine and its ventilation holes. As often as this should be done, it depends on the processing material and the continued use of the product
- The motor of the product and its body must be blown out with dry compressed air from the inside

#### Gearbox

Self-dismantling of the gearbox during the warranty period is prohibited

#### Replacing a Velcro Plate

- Remove the battery
- Remove the polishing sponge
- Turn out the fixing screw with a key, remove the plate with Velcro
- Remove dirt from the interior cavity of the gear case
- Replace the new plate with Velcro and align the mounting holes
- Insert the screw into the threaded hole of the spindle and tighten it firmly
- Perform a test run. Check the disc for imbalance and vibration.

#### Disposal

For EU countries only

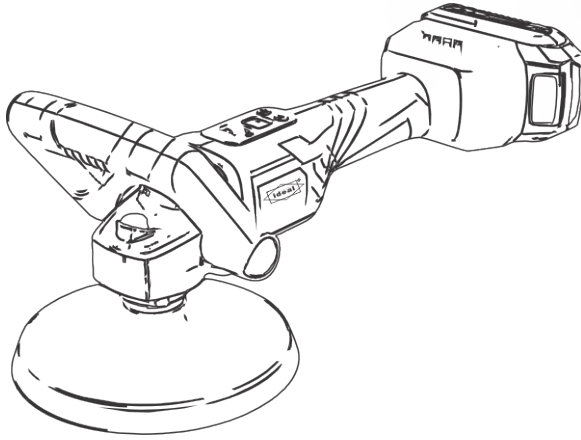
Do not dispose of the power tool in your household waste

In accordance with European Directive 2012/19 / EC on used electrical and electronic devices and implementation, in the legal system of the respective country, it is necessary to dispose of used power tools separately and send to the secondary recycling for environmental protection

Recycling is an alternative to having to send the device back to the manufacturer: The owner of the electrical device, in the event of disposal of the property, is obliged to send it back to the manufacturer, promote proper disposal. A defective device can be handed over to a collection point, which will carry out liquidation in accordance with the law of the country on cyclical production and waste management. This does not apply to those attached to the inadequate equipment, additional devices and auxiliaries not containing electrical parts



## دليل المستخدم مصقلة عديمة المسفريات IDU SP-180



⚠️ تقليل خطر الإصابة، يجب على المستخدم قراءة دليل المشغل وفهمه قبل استخدام هذا المنتج.  
يرجى الاحتفاظ بهذه التعليمات للرجوع إليها مستقبلاً.

8	Slotted self tapping screws	10
9	Gear box set	
9-1	Gear box	1
9-2	Ball bearing	1
10	Self-locking pin	1
11	return spring	1
12	Self-locking cap	1
13	Shaft retaining ring	1
14	bearing holder set	
14-1	bearing holder	1
14-2	Ball bearing	1
15	Brushless rotor	1
16	Brushless stator	1
17	tapping screw	3
18	switch trigger	1
19	cover for Speed regulation panel	1
20	Speed regulation panel	1
21	speed button +	1
22	speed button -	1
23	battery clip HPP	1
24	Left housing	1
25	battery base left	1
26	Right housing	1
27	battery base right	1
28	Polishing pad 180mm	1
29	wool pad 180mm	1
30	LOGO label	1
31	label with data	1
32	Battery pack	1
33	charger	1

ز مورلا

**⚠️ ينذحت!**

كيش ورطخ لإ ريشي، عابتا ديد يوق ة افلوا نتج وأ ة ريطخ بهالى إصبا تايملتعلا هذه

**⚠️ ينبت!**

دمع يد يوق. ة رطخ لءاح دجو والتمحا لإ ريشي هابتا بهالى إصبا تايملتعلا هذع تالكتملا فلت وأ يةخصش.

**ⓘ ملءالم!**

مة مهتامولمع وامدختسالى حنالى نصب ريشي



خداسالا لب قشغيلتلا تايملتع اراق



ي ودمختسان يلع!



يلتيفاقو لإ ءاضوضلل ضرعتلا يدوي نا نكمي. عمسلل اعسللا نادقف.



نتلا زاهجل يقاو مدختسا رخالا داوملاو بشخلا ءجلاعم دنع ءحصلا بلع ريطخلا رابغلا ديلوت نكمي ثيح. يسفى.

وتحت يتلا رصانعلا عم لماعتلا رظحي بلع سوتسبسال!



تايافنلا نم لصختلا تاظمالم

يتنابرل كها تادوالل امءلعا المءسلا تا ريذحت

**⚠️ ينذحت!**

يتنابرل ك مءص ءودح لإ تاميلعتلاو تا ريذحتلا عابتا ديد يوق قد. ءمسلالا تاداشراو تا ريذحت عيمج ءء رق جدرى

ة ريظخ اءص! أو/و قءرح أو/و

مستقبلا فيعجرمك هامادختالس تاميلعتلاو تا ريذحتلا عيمج ظفءا

رييش حلطصلم، هكلا بلع لءيا تادوالل لإ تا ريذحتلا في "يتنابرل كها تادوالل /ءالاطبلاب لمعت لءيا أو /يتكللسا

ية راطبلاب لمعت لءيا (يتكللسا)

**اعمل طققن المة مس.**

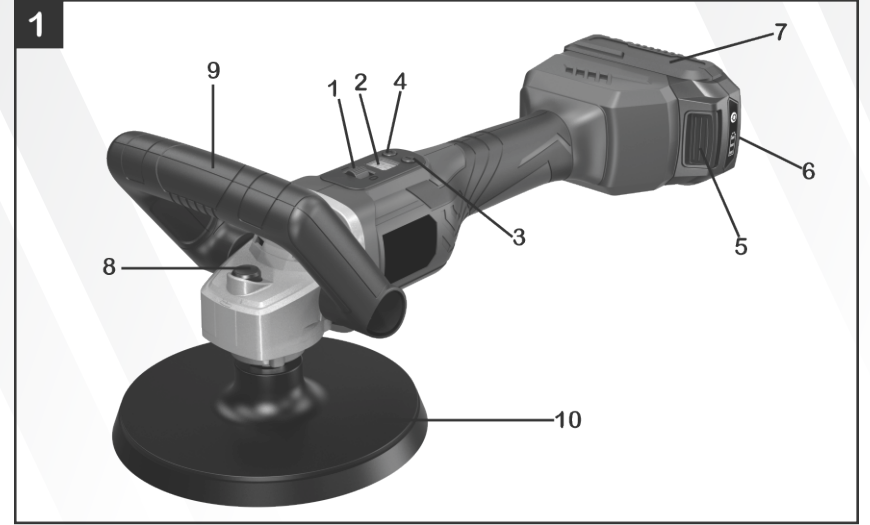
مة قءلظملا أو تبة رمل ريغ قطانملا. اهب يءءجلا ءءصلا ريفوتو لمعلا قءنم افءظن لمع ظافء ءءاوحلا بيتس

• لءءلالش لباق رايغ أو تا زاغ أو لناوس دوجو لثم، راجفنلال لءباقلا ءاوجال في ئيةابرل كها تادوالل ليغبتش قم ال

ب رءكلا تادوالل ءءج تارارش ءيناب شا لإ يدوءعلا لءعءلا وأ رءيخب

قءيتنابرل كها ءءلال لكيعناء تشءة راملاو لافطال ءءبالءال لمع تءرطي سءقءت لكعج فياهبءتال تءب تشبيس

**يئناب رلكها المءس لا )**







## يەفاضالا الماسلا تايملتە

فيصتلا حەول لەع ھەجلا تافصاومو انيب رەھلا رايتلا ھەج قافوتي نأ بجي

• حتننا روڊلا دومع لقلی قە طغضت الەدادال ققوتت.

يە راطبلا حەو ەم لەمەل مەسالا تاوايتحا

1. ريحنتلا تاقصلمو تاميلعتلا عيمج أراق ،يە راطبلا مەزح امختاس ليطيع (1) راطبلا نحاش يە (2 حەو ) و ،يە راطبلا (3) راطبلا لمعت لتيا ەدادال (
2. يە راطبلا مەزح فەك ال تەم
3. يە راطبلا مەزح ليغشت تقو ليلقت تە اڭا في عافترا ئدحي قە ،لەكز الفخ . روفلا لەع ليغلتشا ققوآف ،ريبك لکيش ورح ئوڊح بلا يڊوي امم ،تەحو لا قراح تەردقو نا بيلجف
4. روفلا لەع بيبطلا راستشو ظيفنلا ەاملا نە ريتکلاب نينيعلا سلغا ،اەبرەکلاب حەنملا سەمەل لەآح فيلکڭ بيبیتس قە ف نادققي رەبلا.
5. رەصقتا طەل عەلا ھاضەب عەم يە راطبلا سەتال ەرناد
- (1) اەبرەکلا لئصوم امجسأ ايپ سەتالا طاقن سەملت ال
- (2) المەقتن ختلا مەزح نياطيني واح يەفوآ ەيندەم ماسجاً عەم ەيى لھريغو ەيندەملا تالەملاو ريماسملا لث.
- (3) مەل او رەطل م يە راطبلا حەو ضرەت ال

اطبلا حەو تەمسال رەصقت ديوي نأ نەمي عەم يە بلاک راويو تەنناز تەوخسو رەبقي حەو قەمتت تەحو لا فلت

6. لئايەف رە راحلا جەرد لست نأ نەمي نەام يە تايراطبلا عەومجەو ەدادال نيزختب تەم ال 50 يەو نەم جەرد (122ھ زواجنت او )تياھذرەجە فەرد
7. بئشە فەلات تەاک لو حتئ ،رانلا في يە راطبلا حەو نەم لستت ال قەطعم مەيتق . لئلا مەزح رەجفوا طينج ەيى عەلکض قيرحلل
8. اھب دمتصت او يە راطبلا حەو طقال تس
9. لفەات يە راطبلا حەو دمتخت تس
10. ي نأ بجيت ليغشت راطبيللا تاويأ مويشن تەمضملا و مەقطلا يەلفقەم لطلت تابوشتلا تاعنناضب قەرطخلا.
- سەنابللا لقتل تەواجتسي تس لەع ملا ليللاث ، لەع صاخ تەمەلو تاريخت عەسو بجي ،نخش ليکو او ثلاث فەرط طەسابو ەوبەلا

نخشلا زەھجلا دادەل قيلمع لالغ ، سا نەم دكەملا دحاً قەراش نەصصختەيار . قەرطخلا داوملا يەفياضي مەل طەخناوللاو تاب دق . تەلحملاو كتن تەكارص رث

حەو تەملا لاصتال تاهج نيمأت او قەلأب تەقوبەلا لوح كەرتت ال ئيحب يە راطبلا بئەتو

11. تايراطبلا نەم لستلاب قتل عەتملا ليەتملا نيەوا قلا عەتا

دح بصاق لئايە راطبلا رەم ادەيزل حەناسن

نظحال اڭا يە راطبلا حەو نخشو ەدادال عەم لەملا نە ققوتلا نەم كدأت . ملاكلاب ھەغيرفت لبق يە راطبلا تەحو نخبش قە ختلافا ققاط يە ەدادال

2. ال مەقتن تەحو نخش تەداعبو اطيني حوشم ەيى ملاكلاب . لەع نخشلا تەداغە لمەتصقتلا رەم ريەطيني
3. نيب فەرغلا رە رارح جەرد فييە راطبلا مەزح نە 10 - 40 يەو نەم جەرد 50 - 104 تياھذرەجە فەرد
4. تەمزح نخشلا طيللا ەيىأ مويشنەل اڭا لئيتزاھجلا مەختو بئەاش ن سەتم رثك (لەيوط)

تەم تافصاوملا ھەتھب ظافتحال جەري	
زارطلا	IDU SP 180
رەدقەلا ھەجلا	20 تەلوڤ
يە راطبلا عون	يەليأ مويشن
كەرحملا عون	تار فەسلا يەدع
وڊە رەسلان ليمحت	2800-500 دقيقە لا فيە روڊ
دەاسولا رطق	180 مەم
نەسرو حەملا	M14
يە مەحلا فەتە	2

يە اميف قەللا لئايە روطلا مەقتن ، يەنقەط قەلاب ارجا يە تاريختوڊ تەيفن سەم راعشادق : تەظحال • قەب

ختەساوملا قەلتەا تافنامت بئە لا دليەيلست

كللشا اتكأ فەرعلا

اھقي ال / ليغلتشا رز .

2 يەمقرلا ضرەلا شەاش

عەلرلسا ليەلقت رز

4. رەتە رلسا ادەيز

5. يە راطبلا لصر فز

6. نەلشل يەل رشوم

7. يە راطبلا

8. مەل لفر قز

9. مەللا بضمق

10. لصللا ادەسو

فصولا

تەجنلەم نض مەلغا

ھەل ھەلصا لئەا ميمەم تەم

لەملا شەرو فيو جتەملا دوصق مەل امختلالس .

ون أي نم ياهملا ب لقصلا ءادأل • ، حطس عيمتلل ،ئالملا ليبس لنع ع رايلسل لو قسم نم ريثكلاو ،ئائالاً عيملتو ة فوصلاو نمغلا دولجو جنفابلسا عيملت عم لكذ لبأ ماو ،ئائال  
هصلا اوم عم ةومجملا فيمادختلا لنع لقت ال نارود ةرغيل بسلتنل هاباحس تمي لتياو 500 قةيلدقا فية رود

⚠️ **يهبنت:** الهيشغت فاقيا ند مأكت ،ءادالا فناظ وصح فإو بط ضفبالاصه بهخلا يةراطبلا ةدح ولة زإو

التها زإو يةراطبلا ةدح وتيبثت

⚠️ **يهبنت:** لجا زإو يةراطبلا حدةو تيبثت لب قةادأل ليغاف تشقيا نم كدأت

يةراطبلا حدةو ةادألا سكما ،هتلا زإو يةراطبلا حدةو تيبثت ندغم قلازنت فقد ،طرلشا اذه اءعارم متي لم اذإ .ماكحاب  
ابتصأ ثودحو يةراطبلا حدةو زاهجلا لقت لبأ ديؤي سامم ،يديأأل غمشلل.

رزلا لنع طغضا 5 اهجلل سيبئرلا لكيها نم يةراطبلا حدةو لزلل كشا فيحضم هو ماك ز 2

**يةراطبلا نحش**

**يةراطبلا نحش اء رجأ**

الاصاف . زاهجلا نغ يةراطبلا

دد رجملا رايتلا اقطة ردصمب جتنملا عم قف رملأ نحالشا ليصوتب قم

3. يةراطبلا لخدأ 7 كللشأ .نحالشا في لماكلا ب يةراطبلا لاخدأ نم كدأتو ،نحالشا في 4 ووضلا رييش

نةو حمش يةراطبلا نأ لبأ تباثلا رمحال

4 لياوح دعب 60 يةراطبلا نح شمئي ،دقيقة كلا ب.

نحالشا في هأكرت أو هامادختاس نكميو لماكلا ب نةو حمش يةراطبلا .تباث رضأ ءوضب نحلشا لامتكأ لبأ ةرايشا تميمس

رزلا لنع طغضا ،نحالشا نم يةراطبلا لئأ زل 5 يةراطبلا مةزح لنع دةوجوملا يةراطبلا لصفل

لا نحشوا طيمناد ةيقر ارح ةجرد يفختوارت نيب 5 م تاج رود يةو 40 يةونم جةرد

نم لأق ةرارح جةرد ديوت نأ نكمي 5 نكمي ال قحلا لا امختالسا لنع ريطن رماً هوو ،دنا زلا نحشلا لبأ يةونم تاجرد

نم لنعأ ةرارح تاجرد في يةراطبلا 40 يةراطبلا نحش مءمالء رثكال ةرارحلا جةرد .يةونم جةرد 20 يةونم جةرد

لبأ 25 يةونم جةرد

مدئل ليغلتشا إيقاف لئاح في نحالشا كرت بجي ،ملاكلا ب اءدةو يةراطب نحش لامتكأ ندع 15 ةقيقر قتييق لا لبعذب يف  
نيثلا تيم نيثو راطب نم رثكأ نحال تش .يةلاتلا يةراطبلا نحش

ديؤي دق .ةضفخنم يةراطبلا تناك اذإ ةادألا ليغبتش تقم ال إماه ال يةراطبلا لقت لبأ لكذ

أ مقتبب ليثقل غي اطي قليملا كلا ب

دعيفوط تبحالص قرتود قلين ليغشت ،تقفر اطيلا ةويأ مويش نحشاهت (ام بمسي "لئغلا غييت "(دعيفوط تارثلي  
ملاكلا ب يةراطبلا نحى بشصوي ،ليوأل امختسال لبو قأ ،نيزختلا نم

**نحش لا تارشمو (لكشلا 4**

فختاس هءجلا طقءم نحالشا لنع دءحملا .

قلا نحش لبوا طيلمق ،ةلئلك ليصوت قاطلا لبلا يهكلا رايتي ناقم متصوتلا ةمزح لي اطيقي نحالشا بلا نحش دعبوا طيقي  
نحالشا نم يةراطبلا مةزح لئأ زإ دعب اقطةلا ردصم لصاص ،ملاكلا ب

بجي .طقلي فخادلا امختالسل زاهجلا اءمةو طرلا أو رطملا أو ءاملا بنجت

الاولو رطملا نحالشا ضرعتو جلا فورظلاو جلشو خالاً قيساقلا ةيئال بستوهكلا ناودالا مدخنتياب طر نكامأ يفوأ تبهلب  
راخب ماء.

ءمالع مدخ زكرم لبأ حذه ،لاكالشا نم لكش يأب فهلت أو طهوقس أو ةوقب برضلل هضرعت لئاح في نحالشا دمختتس ال  
مدتعم.

ريغ عيمجتلا ديؤي قد .قنايص أو الحصا لبأ جءاحب ناك اذإ ءمالعلا مدخ لبأ هر ضأ .نحالشا فكب تقم ال

قيرح بوو نشأ نية ابرهك مدص ثودح لبأ حيحصلا

**لعملأ دعب لبق**

دوجو دمع نم كدأتل لئال طبضاو ليصوتلا ةومجم نم ققحتو ،هتوبع نم لقصلا لئأ اجرخاب ةقوايلسا في تاباصإ

**نةياكلما ليشغت فاقيا /شغيلت**

إيقافا /يلغلتشا رز لنع طغضا 1 عضول اءرع تمي .نةياكلما ليغتش ءدبل "00 لنع "

شةاش طغضا ضرعلا عضول يقافاإل /يلغلتشا رز لنع 0 لئال ليغاف تشقيال

**عة رسلا ديدحت**

**(لشكلا 5**

اديز رز لنع طغضا :عة رسلا اءةيرة رللملا اضرعلا شةاش ضرعت .لئال ليغتش دعب 05، 08، 15، 15، 20،  
25، 30 زلا لنع طغضا دنع عة رسلا تاوطخ عنيي امم 500 دقيقة لا في ةروه 800 يلدقا في ةرودة 1500 ةرود  
دقيقة لا في، 2500 دقيقة لا فية روه 2800 ةروسن ةقيقدلا يفيمط

طغضا :عة رسلا ليلقتعة رسلا ليلقت رز لنع 2 ععب امدنعو ةلألا ليغشتو كتن نم بلعأ ةلألا ءعرس 500 دقيقة لا في ةرود  
امقرأ اضرعلا شةاش ضرعت 05، 08، 15، 20، 25، 30 عة رسلا تاوطخ نأ عنيي مام ،رزلا لنع طغضا ندع 500  
دقيقة لا فية روه 800 دقيقة لا فية روه 1500 دقيقة لا فية روه 2500 في رود دقيقة لا، 2800 ةروسن ةقيقدلا يفيمط

يد سي لا ضرعلا شئاش

ع رلسا يندحت تاميلعت .

عة رسلأ يدحت

تأديحتلا	نتيملل املقرال	شاشة لا لىع هايلل رامشلل عة رلسا	تاطحمل
	.		
0		0	
0	0	0	يلغلشلا عضو فيقةاطلا
1	5	0±500%	
2	8	0±800%	
3	10	0±000%	
4	15	0±500%	
5	20	0±2000%	
6	25	0±2500%	
7	30	0±3000%	عة ر سلعا

2 ضة ورلمعا اعطالا تاميلتع .

اطخلا قمر	للتامجلأ بابلسأل	ولحلا
E1	نذا زلا لمحلا نم ايتمحلا نذا زلا ليمحتلا . ايعلا هابر هكلا رايت نم رنكا 50 ريبما + 4 ريبما ≤ 500 ليلجنتاش) هقات لئال .	لئال ليغاف تشقياب قم . لئال ليغتش ادةعا . 3ق ريغ هالعا ناروكنملا ناءارجلا ناك اذال نيليطني ،قيبير ا بجيرلا ءالا لاس نيمصختلامحالصال
E3	غيللتشا لاطعا نم ايتمحلا: 1 - كرحملا لمع دمع لبا جبة راخ لا بابالسا عضب يدوت هقات لئال .	
E4	كتلا ءاوتلا نم ايتمحلا: ا زلا ليمحتلا يند هقات لئال .	
E5	دقا زلا ءاوتلا نم ايتمحلا ءالا لمعتلا ليمحتلا لوط قرضلي. . نم رنكا لبا ندصلا يدسك ائالوصولا باهاش ءا راج حة رد اصفخنا ندع لئال ليغة تشاعا نكمي 100 لبا ديوي مام ،قيونم حة رد ملع نع زامجلا ققوت	ليغفت تشوقل يدها ريتب قمو لئال0.5عئاس ندصلا يدسك ائالوصولا باهاش ءا راج حة رد اصفخنا ندع لئال ليغة تشاعا نكمي لبا60قونم حة رد
E6	هذجال نم ايتمح دوجو دمع نم ريگب لاق هابر هكلا نح شمعج14 تلوف ± 0.5تلوف	ملاكلا ب نوحمشلا يراطبلا دمختاسو يراطبلا نحاش
E7 E8	لئال لاطع : ءجهالا يءاحم بتيكاملا لاطعت : كرحملا ايتمح	لئال ليغاف تشقياب قم . لئال ليغتش ادةعا . 3 ناء رجال ناك اذ اق ريغ هالعا ناروكنملا نيليطني ،قيبير ا بجيرلا ءالا لاس لني صمختلامحالص.
E9	نذا زلا هذجال نم ايتمحلا	1 يراطبلا هذجا نم قحت . الما عيبط . وكي نا بجي ثين ≤ 21تلوف دهج يراطبلا رنكا من 30 تلوف هذمو يراطبلا دمختاس .

اهلا دبتاس أو ءادال قافرا

وركيفلا صدرلي قع ءوقب هابلع طغضرا ،نيعأل امما لقصلا ءادأ حتخالل ف نم

مذختلماكلا لقصلا ءادأ طقفمامتيا

مذقل ملعت هاكرتاو لقصلا لئا ليغتش قم 30ءيناشوقتيها .ود رودي صرقلا نا نم دكانتني نلعي وأ ضريت

قم • ليغاف تشقياب اهميلا ب لقصلا .

تاميلتع لعملأ



تسأل ليغاف تشقيا عديتقولا نم ءرتفل نارودلا في لقصلا ءادأ رمتلة

صلا جتفاس تيبثت ندع ،ئالملا ليبس لع( ءادالا لادبتاس عذب ،قولا تالفخابيس )يتءامرة رنات تيبثت تمي قل،متي ال ت

نارودلا ءةر سريغتب قم ،لءاحلا هذه في.ا دهاعتابع مظنملا ءدعاسمي ال سفت هالا ليلقتسم نلا زازيوتى قلوب .

بهيكرتب احملساو لهيغب تشجي ،لوقصم حط سلبا جتنملا راضحا لب ق•

ملاكلا ب كرحتم لتيوط ءرتفل جتنملا دمختاس ،مءدخلا نم لتيوط ءرتقلو لقصلا فيءيچ جئاتن قيقتل •

حطالسا عملماعتلا ندع • "حساسةلا" (ليبس بلع ندع • امعطلا نم ريثكلا لواننت آل بجي )، رابلسا ايتمحل ،ئالملا

ساورضلا نم ،لقصلا ءداسو ماذختيسا نم لقص فرط ماذختاسولا عاونأ نم عون لكل لصف

يئةانلعا ونةايلصا



يراطبلا لئا زانم كدأت ،قلصلا لئا لىع ليقمع أي عذب لبق

فيظنتلا

فيظنتلما هعماو جة لاعما ادوم لع لكذ دمتعي ،لكذب اميلقا غيبني ما ردقب .ماظنتاب هاب ءصاخلا يءوهنتلا تاحتفو لئال

جتنمل رمبئسملا

سورتلا لبةع خلادلا نم لجافا طوغضملا ءاوهلاب مهجسو جتنملا كرحم ريغت بجي •

نامضلا ءرتخالل ف سورتلا لبةعل اتيذلا كيكتفل رطحي

وركيفلا حول لادبتاس

يراطبلا لئا زاب قم •

لقصلا جتفاس لزا •

وركيفلا امذختباس دوللا لئا زاب قمو ،حاتقم امذختباس تيبثتلا غيرب اجرخاب قم •

سورتلا لبةعل ليخادلا فيوجتلا نم اخسوال لئا زاب قم •

تيبثتلا تاحت قءا اءاحب قمو وركيفلاب يددجلا حوللا لدبتاس •

خلدامكحلا ب طهيراو لزملا لبةولما حتقتلا فيغيربلا

مق ها ءارجابتياب ا .ليغتشصرقلا صحفحيث لا مدع نغ اوئن هالا وازت .





طقي فروأل ادحتال لودب اصخ

لكز نم تايفن فييتابرهكلا ةادأل نم لصختت ال

قوئلوروألا هيجوتيب C/19/2012 ميل نيوناقل امظنا في يذهافتو ؤلمعتسلا نية ورتكلا ؤلو نية ابرهكلا ؤز هجالل نابش رورضلا نم ،ينعمالي لا رهكلا تاودألا نم صلخستلا ؤيتابلمعت نم لكشيو او لصفلا ؤدا عا بلا اهلا سودلا ري نانشيوامل ؤي نةيلا.

ريودتلا ادة عا را بلا رارطضالا نع ليدبوخا ؤرم زاهجلا لاسوئي :ةعنصملا ؤكرشلا بلاهكلا زاهجلا كلام مزيتياب يف كة رلشا لب اذتها عا لب يدبك منه يمللسا لصختلا عيجبتش ،ةعنصملا كة رلشا لب اذتها عا لب يدبك ،زاهجلا نم لصختلا لةاح تس لتياو ،عيمجت ؤطق لب بيمع زاهج يملتس نكمي .ةعنصما هو ؤلا بصتو ؤيفقوئاقل ان ؤلودلا نالا نانشيوودلا جانتو اداو ناظني ال .تايف بلع اذ قبرملا كلتققاضالا ؤز هجالو تادعما بلا كلا ريغ تاقحلملاو ؤيفلا ؤيفال يتحتوتتي ؤزجا بلع يتتاب رهك.